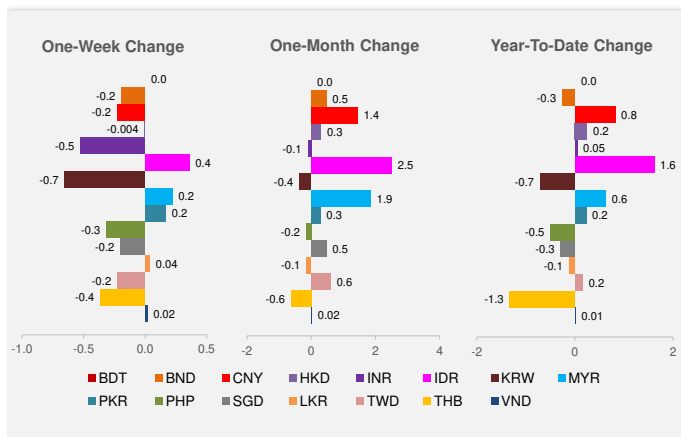
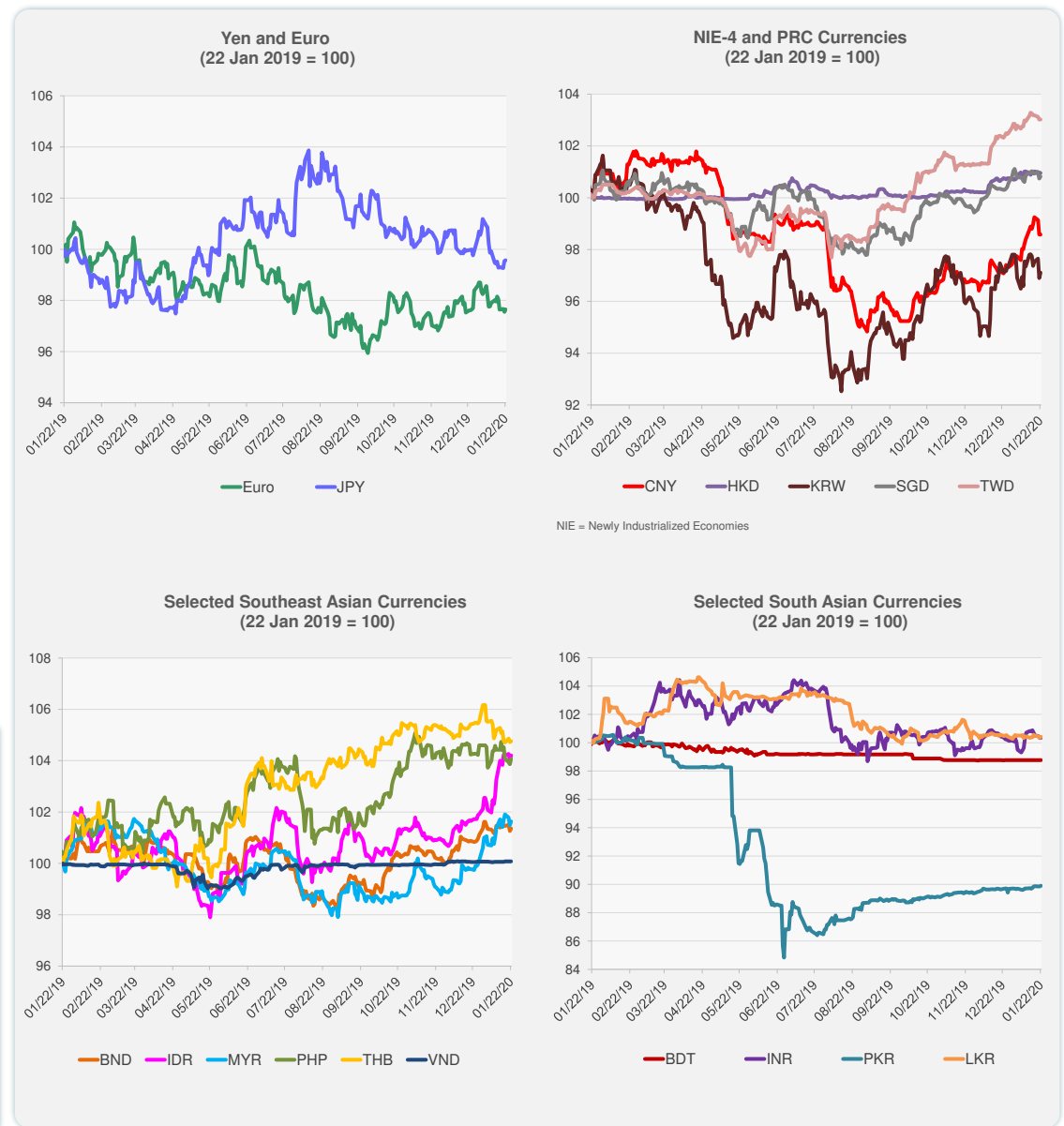


	Latest Closing	% change from Previous Day	% change from 01-Jan-20
Euro	0.90	0.10	-1.06
Japanese yen (JPY)	109.84	0.03	-0.98
Bangladeshi taka (BDT)	84.88	0.00	0.00
Brunei dollar (BND)	1.35	0.10	-0.26
Chinese yuan (CNY)	6.91	-0.01	0.82
Hong Kong dollar (HKD)	7.77	-0.02	0.25
Indian rupee (INR)	71.20	0.02	0.05
Indonesian rupiah (IDR)	13,646.00	0.17	1.61
Korean won (KRW)	1,164.50	0.22	-0.71
Malaysian ringgit (MYR)	4.07	0.15	0.63
Pakistan rupee (PKR)	154.55	0.06	0.23
Philippine peso (PHP)	50.91	0.21	-0.50
Singapore dollar (SGD)	1.35	0.08	-0.29
Sri Lanka rupee (LKR)	181.39	0.07	-0.12
Taipei,China NT dollar (TWD)	29.99	0.00	0.16
Thai baht (THB)	30.37	0.03	-1.33
Vietnamese dong (VND)	23,171.00	0.00	0.01

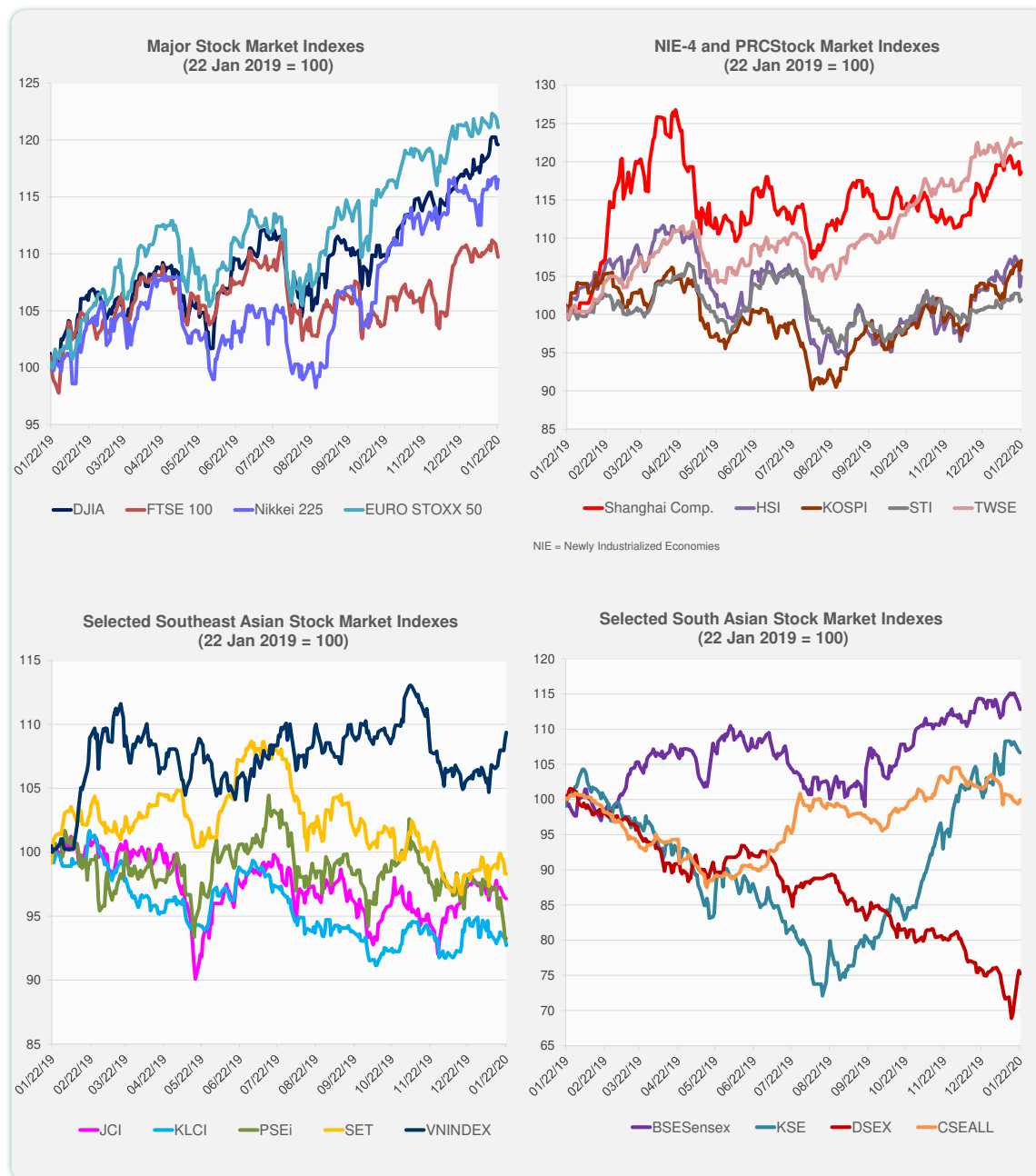
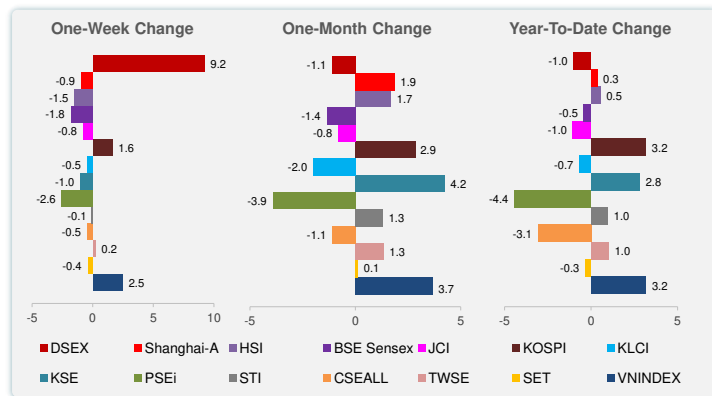


Note: Negative/Decreasing values indicate depreciation of local currency, and positive/increasing values indicate appreciation.
Source: Bloomberg.



Source: Bloomberg.

	Latest Closing	% change from Previous Day	% change from 01-Jan-20
US Dow Jones Ind Avg	29,186.27	-0.03	2.27
US NASDAQ	9,383.77	0.14	4.58
US S&P 500	3,321.75	0.03	2.82
UK FTSE 100	7,571.92	-0.51	0.39
EURO STOXX 50	3,769.79	-0.51	0.66
Japan NIKKEI 225	24,031.35	0.70	1.58
Bangladesh DSEX	4,408.11	-0.59	-1.01
PRC Shanghai Comp.	3,060.75	0.28	0.35
Hong Kong, China HSI	28,341.04	1.27	0.54
India BSE Sensex	41,115.38	-0.50	-0.46
Indonesia JCI	6,233.45	-0.08	-1.05
Korea, Rep. of KOSPI	2,267.25	1.23	3.17
Malaysia KLCI	1,577.98	-0.59	-0.68
Pakistan KSE 100	42,561.27	-0.15	2.80
Philippines PSEi	7,468.73	0.03	-4.43
Singapore STI	3,253.93	0.21	0.96
Sri Lanka CSEALL	5,941.42	0.46	-3.06
Taipei, China TWSE	12,118.71	0.00	1.01
Thailand SET	1,574.59	-0.02	-0.33
Viet Nam VNINDEX	991.46	0.52	3.17



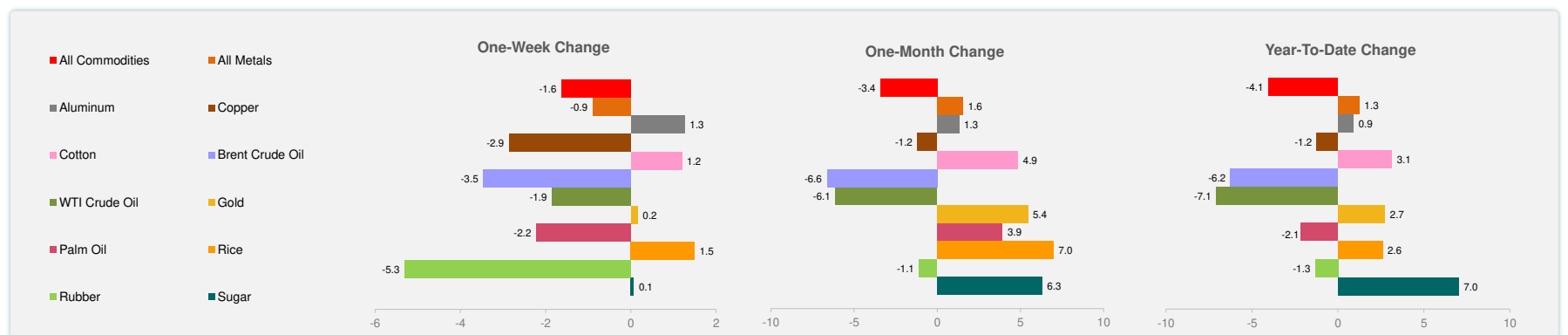
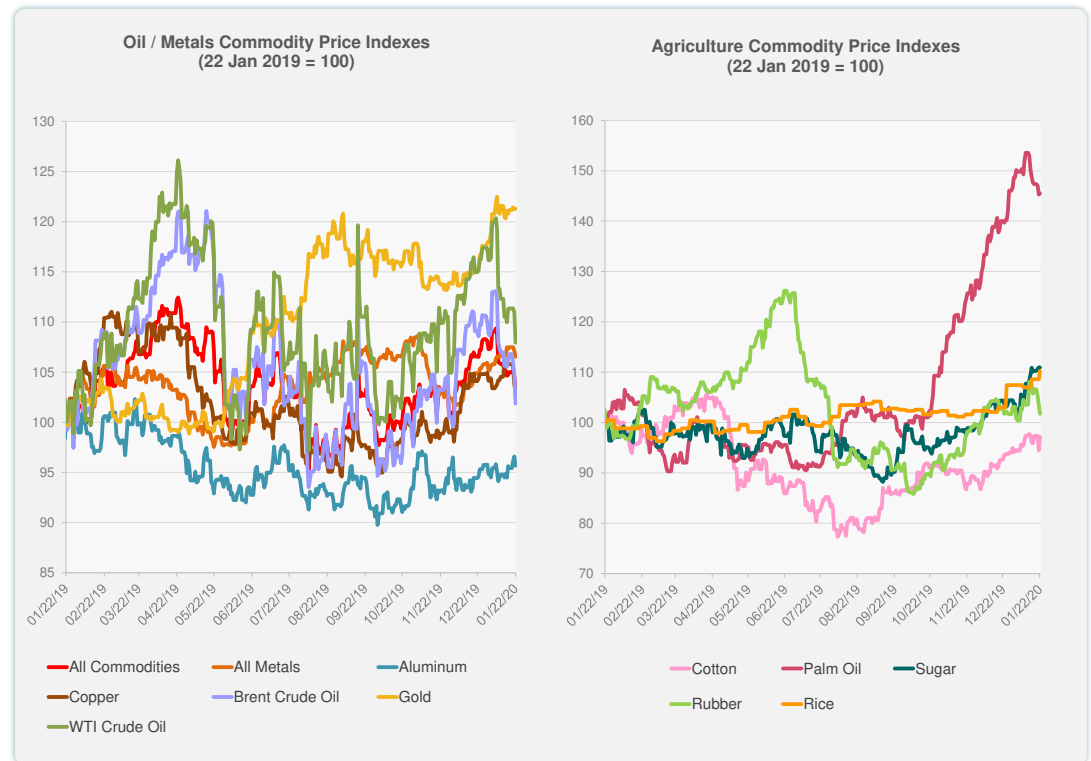
Source: Bloomberg.



Source: Bloomberg.

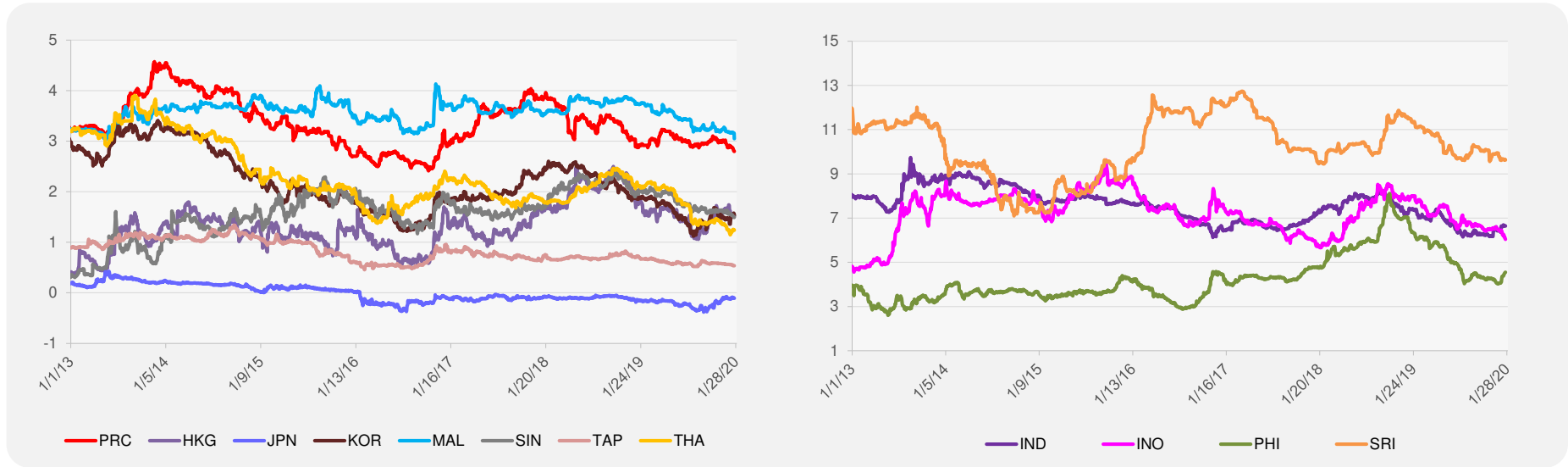
	Unit	Latest Closing	% change from Previous Day	% change from 01-Jan-20
S&P All Commodities	US\$	418.53	-1.56	-4.06
S&P All Metals	US\$	220.27	-0.57	1.25
Aluminum	US\$/metric ton	1,797.25	-0.95	0.90
Copper	US\$/metric ton	6,073.75	-0.89	-1.22
Cotton	US cents/lb	68.38	2.84	3.14
Brent Crude Oil	US\$/barrel	62.17	-2.74	-6.24
WTI Crude Oil	US\$/barrel	56.74	-2.74	-7.08
Gold	US\$/troy oz	1,558.78	0.04	2.73
Palm Oil	US\$/metric tonne	723.77	0.15	-2.13
Rice ¹	US\$/metric ton	475.00	1.50	2.59
Rubber ²	US\$/kg	164.10	-1.62	-1.32
Sugar	US cents/lb	14.49	0.00	7.02

¹ Latest closing price from 22 January 2020.
² Singapore Exchange, Ribbed Smoked Sheet Rubber.

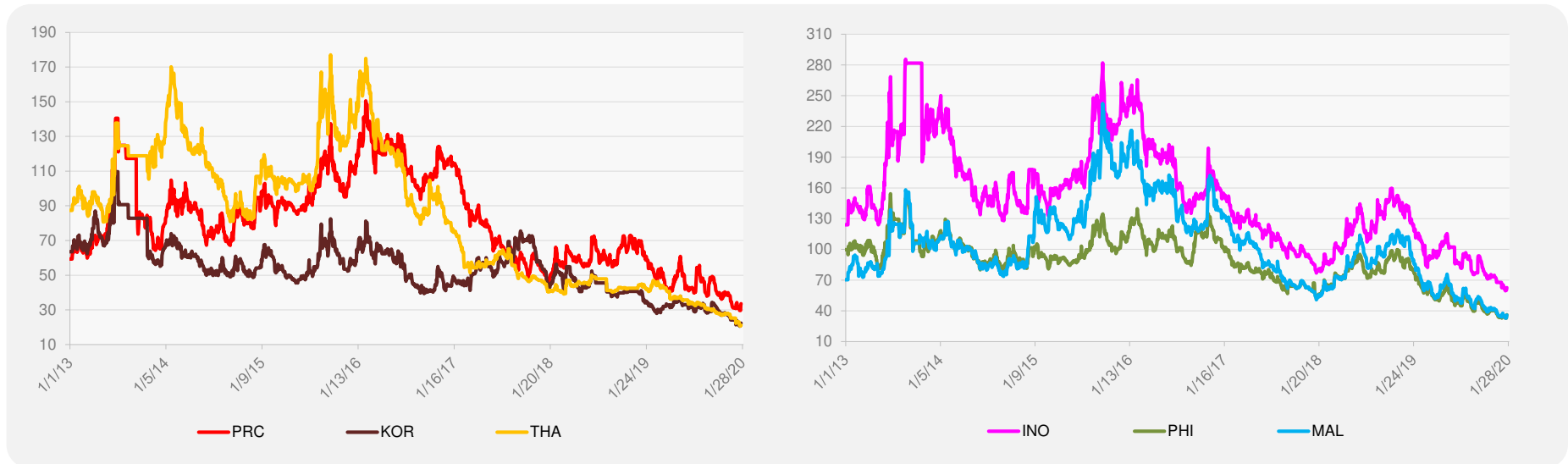


Source: Bloomberg.

5-YEAR LOCAL CURRENCY GOVERNMENT BOND YIELDS (%)



5-YEAR CREDIT DEFAULT SWAP¹



¹ In USD and based on sovereign bonds.
Source: Bloomberg.